

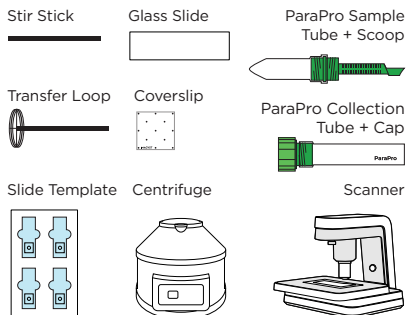
QUICK START GUIDE

vetscan IMAGYST™



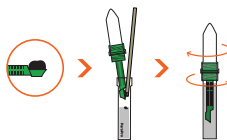
CHECK LIST

Ensure you have the following materials ready to run a test:



01

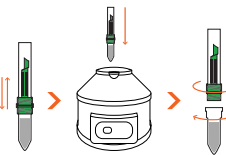
COLLECT FECAL MATTER



- Unscrew the **tube cap** from the **collection tube**
- Add 1 scoop, about 1 gram, of fecal matter to the **collection tube**
- Use a **stir stick** to remove the matter from the **scoop** and mix it
- Screw the **sample tube** onto the **collection tube**
- Continue twisting until the tubes are firmly screwed together

02

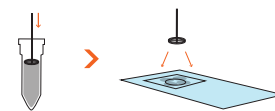
PREPARE FECAL SAMPLE



- Shake the **tubes** and then place them in a **centrifuge**
- Spin the sample for 2 minutes at 500 RCF
- Unscrew the **collection tube** with the **scoop** and discard both
- Place the **sample tube** in a tray

03

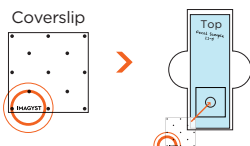
ADD SAMPLE TO SLIDE



- Place a **glass slide** in the **slide template** with the name or barcode towards the top
- Pull material from the top of the **sample tube** using the **transfer loop**
- Place 2-4 loops of fecal matter onto the **glass slide** around the edge of the target circle

04

PLACE COVERSLIP



- Orient the **coverslip** with the **IMAGYST** text readable in the lower left-hand corner of the **coverslip**
- Place the coverslip on the **glass slide** over the targeted area of the **slide template**

05

INITIATE TEST



- Select **Scan** for the correct sample; Sample information will come pre-populated from any FUSE-connected software system
- If no integration is available, select the **Add Sample** icon (+), enter in the sample information, select **Create**, and then select **Scan**
- Select a **scanner**, and make sure the tray is open (select **Open Tray** if necessary)

06

LOAD AND SCAN SLIDE



- Unlock the slide holder and place the **glass slide** (with **coverslip**) on the slide tray
- Place any label or writing towards the **right-side** of the slide tray and lock the slide holder
- Select **Scan Slide**

07

REVIEW SCAN



- Open the sample results, review any captured images, and select examples for inclusion in the report
- Add any comments and select **Finalize**
- Select the **View Report** icon to view a shareable PDF or review results in FUSE-connected software system

For questions concerning IMAGYST please contact VETSCAN Technical Support at 800-822-2947 or dxsupport@zoetis.com.

All trademarks are the property of Zoetis Services LLC or a related company or licensor unless otherwise noted.
© 2020 Zoetis Services LLC. All rights reserved. VTS-00248

zoetis